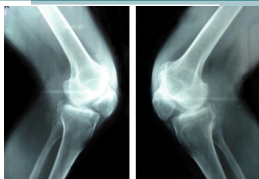


## Patella baja= difficult primary TKR?

Nicolas PUJOL,  
Philippe BEAUFILS  
Orthopedic Department  
Centre Hospitalier de Versailles  
France  
npujol@ch-versailles.fr



- The authors declared no conflicts of interest for this presentation.



## Potential difficulties before TKR

- Axis
- Slope
- Stiffness
- Patella baja
- Ligaments...
- Bone
- Skin
- Problem for Surgical exposure?
- Eversion/lateralisation of the patella



## Patella baja

- Risk factors of patella baja:
- Surgery++++
- HTO
- Fracture
- Chronic Quad tendon rupture



## What is called a patella baja/infera?

- Index
- Caton-Deschamps < 0.6
- Blackburne- Peel < 0.54
- Insall-Salvati < 0.8
- ...
- Different measurements! Lot of controversies

Knee Surg Sports Traumatol Arthrosc  
(2005) 13: 539–544  
DOI 10.1007/s00381-004-0573-y

KNEE

Hayrettin Kocmaz  
Rifat Erginer  
Tahir Oget  
Aksoy Seyahi  
Muharrem Babacan  
Yildiz Temelkaleli

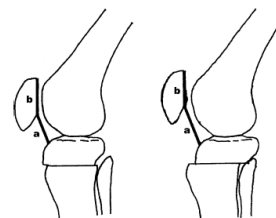
Evaluation of patellar height  
and measurement methods after  
valgus high tibial osteotomy

ISI (range)	1.05 (SD: 0.10) (0.83–1.39)
BPI (range)	0.80 (SD: 0.13) (0.60–1.23)
CI (range)	0.91 (SD: 0.14) (0.60–1.45)



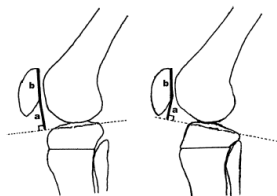
## What is it?

- Index
- Caton-Deschamps 1977
- Depends on translation if malunion (HTO)
- ...
- Different measurements!



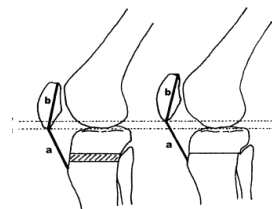
## What is it?

- Index
- Blackburne- Peel 1977
- Tibial slope!
- ...
- Different measurements!



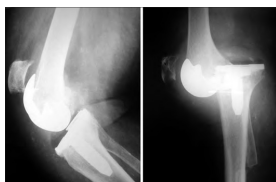
## What is it?

- Index
- Insall-Salvatti 1971
- Depends patellar tendon length++
- ...
- Different measurements!



## Is it important before TKR?

- Take clinical examination (stiffness) and patellar height
- IF Loss of flexion ( $90^{\circ}$ - $100^{\circ}$ )
- AND Patella baja:
- = Be careful!
- Highest risk= patellar tendon avulsion
- Rand JA Clin Orthop 1989



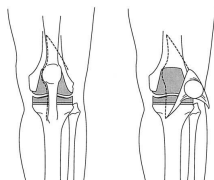
## How to manage?

- Soft tissue procedures:  
(Release of the tendon, resection of the fatpad, quad releases...)
- Bone Tibial tubercle



## Quad Turn down

- VY
- Weaken extensor mechanism
- Delay rehabilitation

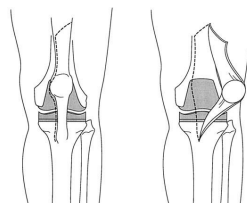


Campbell Orthop clin north am 1998



## Rectus Snip

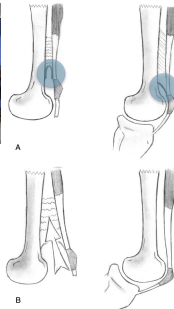
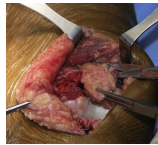
- 1943 Coonse and Adams
- 80's Insall (1984-95)
- Garvin Clin Orthop 1995; the evolution of the quadriceps snip
- Trousdale Clin Orthop 1993
- Hsu J Arthroplasty 2012
- Controversy ... Good/Poor results?



## Medial approach quad release

- Tarabichi S J Arthroplasty 2010
- Stiff knees
- Patella baja

- Complete resection of the suprapatellar adhesions
- Gain of motion 34°



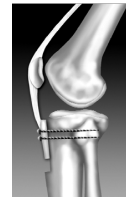
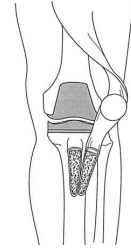
**Table 1.** Shown are the measured prerelease ROM (under anesthesia) and the average immediate postrelease improvement

Prerelease ROM (range) (°)	85 (n=2)	90 (n=2)	95 (n=9)	100 (n=4)	105 (n=14)	≥110 (n=11)
Post-release improvement (average, in degrees)	55	40	38	39	32.5	26

## ATT Osteotomy

- Dolin JBJS 1983
- Whiteside Clin Orthop 1990
- Friedrich N Oper Orthop 1999

- Quad muscle preserved
- Avoid patellar tendon avulsion
- Vascular supply patella
- Bone healing



## ATTO : Indications

- Patella Baja, short patellar tendon
- Loss of knee flexion: stiffness++
- Patellar subluxation +/-

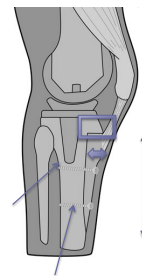
- Debette C Servien E Neyret P  
Int Orthop 2014  
TKR and Stiff knee n=300

ATT Osteotomy in 8% knees



## Technical key points

- >7cm
- Thickness 1cm
- Width 2cm
- Self locking
- Height: raise the patella?
- No Need for Stem
- 2 bicortical screws



Young J Arthroplasty 2008  
Whiteside LA Clin Orthop 1990

## Results ATTO and TKR

Pre- and postoperative mean knee and function IKS scores

IKS SCORE		Group A	Group B	p<0.05*
Knee score	Preoperative	45	44	NS (p=0.81)
	Postoperative	91	91	NS (p=0.84)
Function score	Preoperative	54	54	NS (p=0.84)
	Postoperative	78	74	NS (p=0.09)

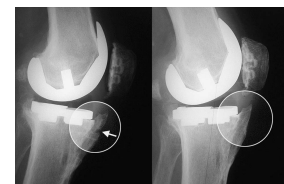
- N=113
- ATT fracture 2,38%
- Wound problems 3,18%
- Stiffness 4%

Piedade, Servien The Knee 2008



## Results

- ROM : 73° ±34.9 to 88 ± 21.1  
(mean gain of 15 ±23.1)
- 3/20 fractures conservatively treated



Tabutin Orthop Traumatol  
Surg Res 2011

### Take Home Message

- Think about ATT osteotomy (10% stiff knees)
- In difficult knees
- With patella infera
- And peroperative problems to mobilise patella despite soft tissue releases
- Safe, reproducible
- Frequent minor complications
- Few major complications

