



6th Advanced Course on Knee Surgery

January 31st – February 5th, 2016 Val d'Isère - France

www.kneecourse.com

Patella bipartita

Burt Klos

ICONE

The Netherlands



Patella pain

- Plica synovialis
- Patella chondropathy
- Patella bipartita
- Patella instability /dysplasia

Patella bipartita

a.inferior 5 %

b.lateral 20 %

c. superolateral 75 %



closure between 8-12 yrs

incidence 1- 5 %

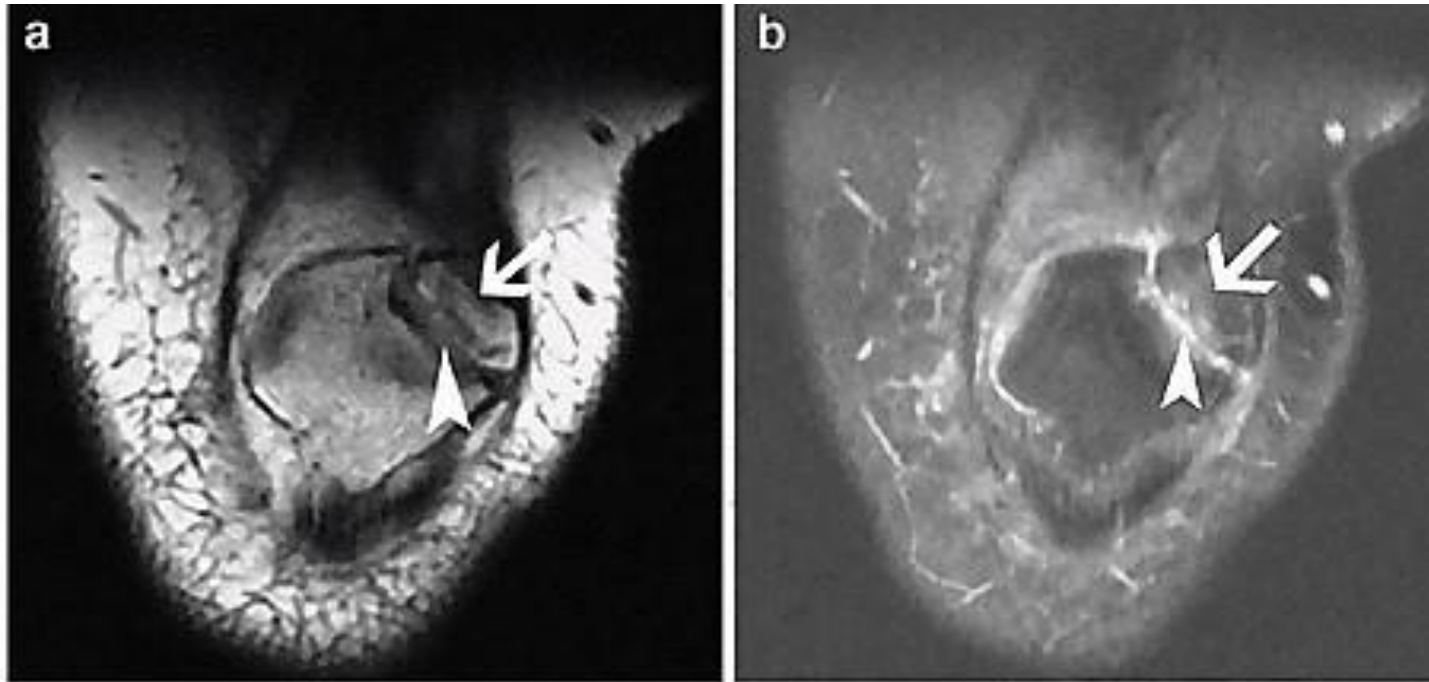
50 % bilateral

Nonsurgical treatment 3 mths

Surgical interventions

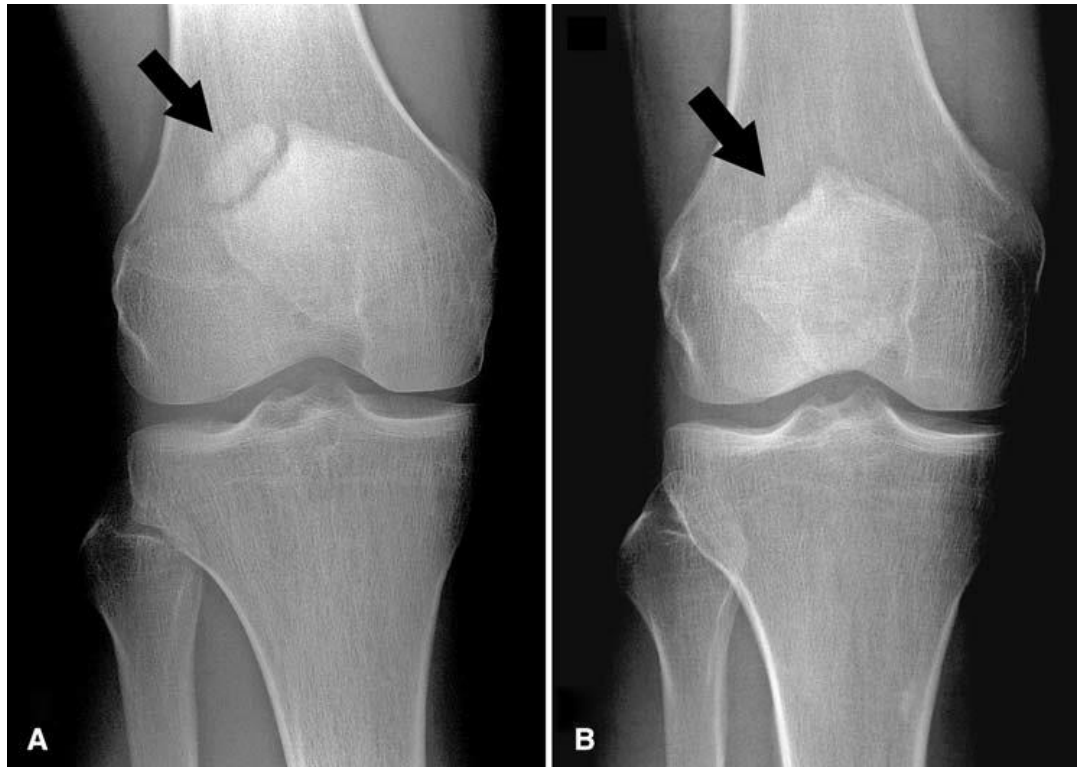
- 71 % excision fragment (5 % arthroscopic)
- 13 % vastus lateralis release
- 13 % lateral retinaculum release
- 3 % ORIF fixation
- Release 94 % good excellent
- Excision 98 % return to sports 85 % complete pain relief
- Orthopedics Review 2014

Fluid instable fragment



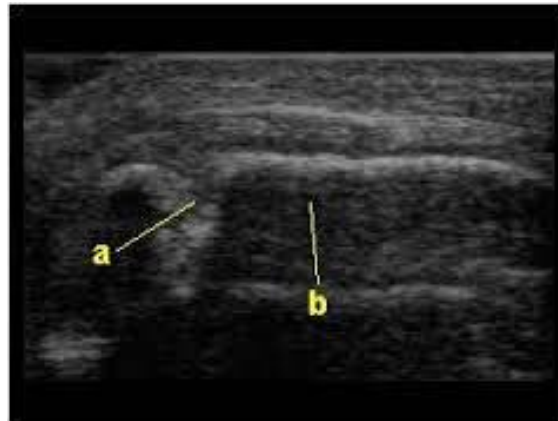
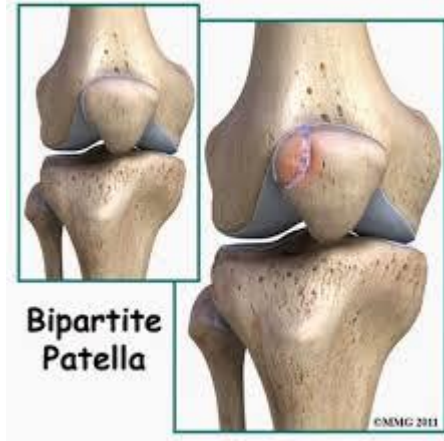
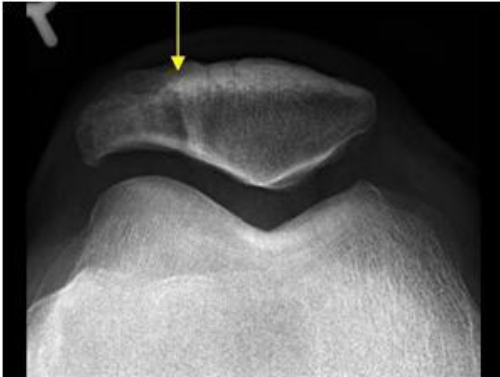
CORR 2008

- Excision of Painful Bipartite Patella
- Good Long-term Outcome in Young Adults



MSU diagnosis

- Dynamic US / infiltration



Arthroscopic diagnosis and removal



Conclusion

- Painfull patella bipartita
- 1 diagnosis (x ray +)
- 2 conservative treatment (brace / injection)
- 3 operative after 3 months (?)
- 4 most frequent operative treatment : Excision